



Frac Pit Survey for RSP Permian

Completed by:

Transwater Energy, LLC

RSP Permian

Cowden 19 Frac Pit

Survey Completed 8/14/2015

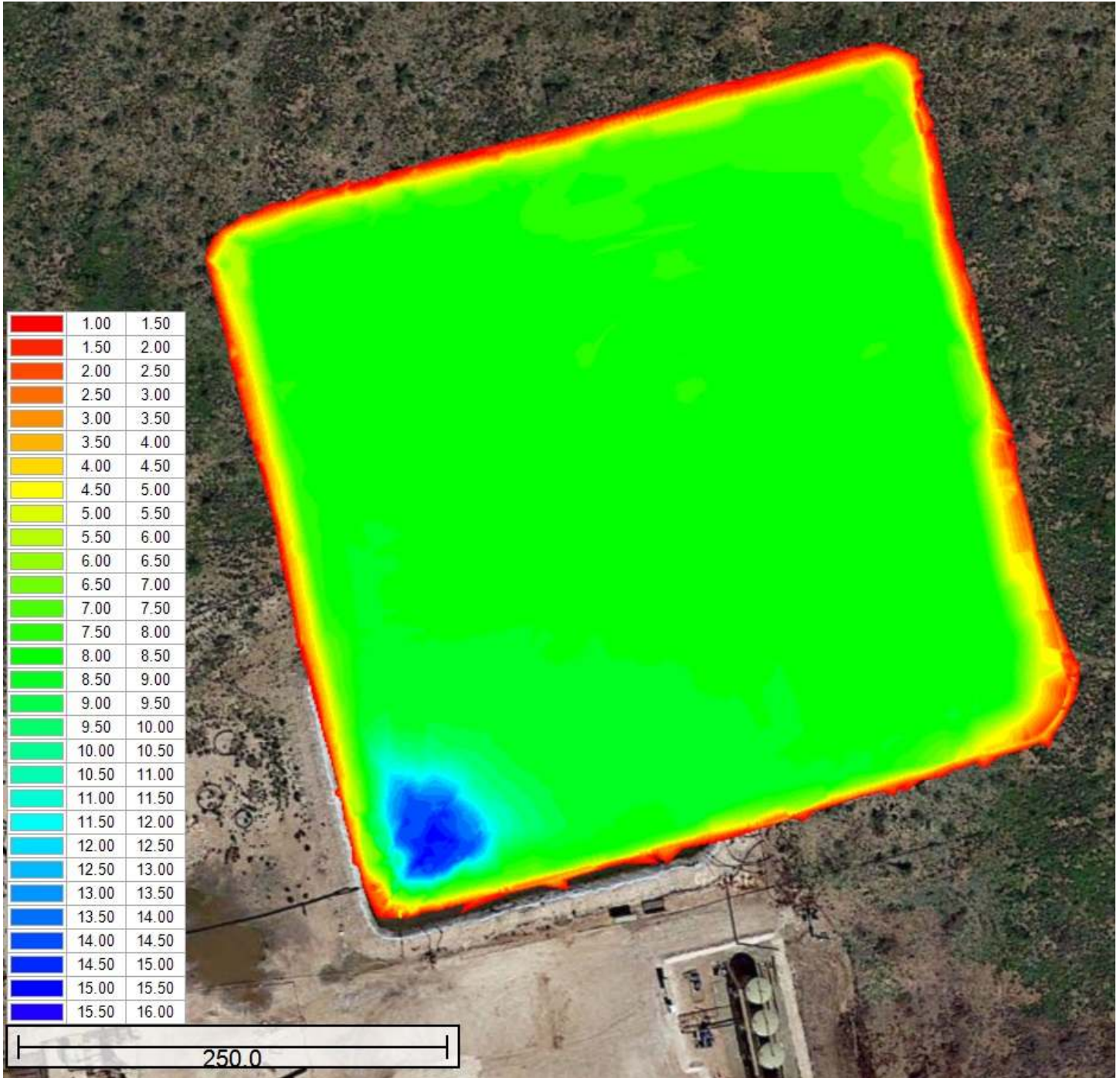
Max Depth: 15 ft.

Current barrels of Water: 254,369

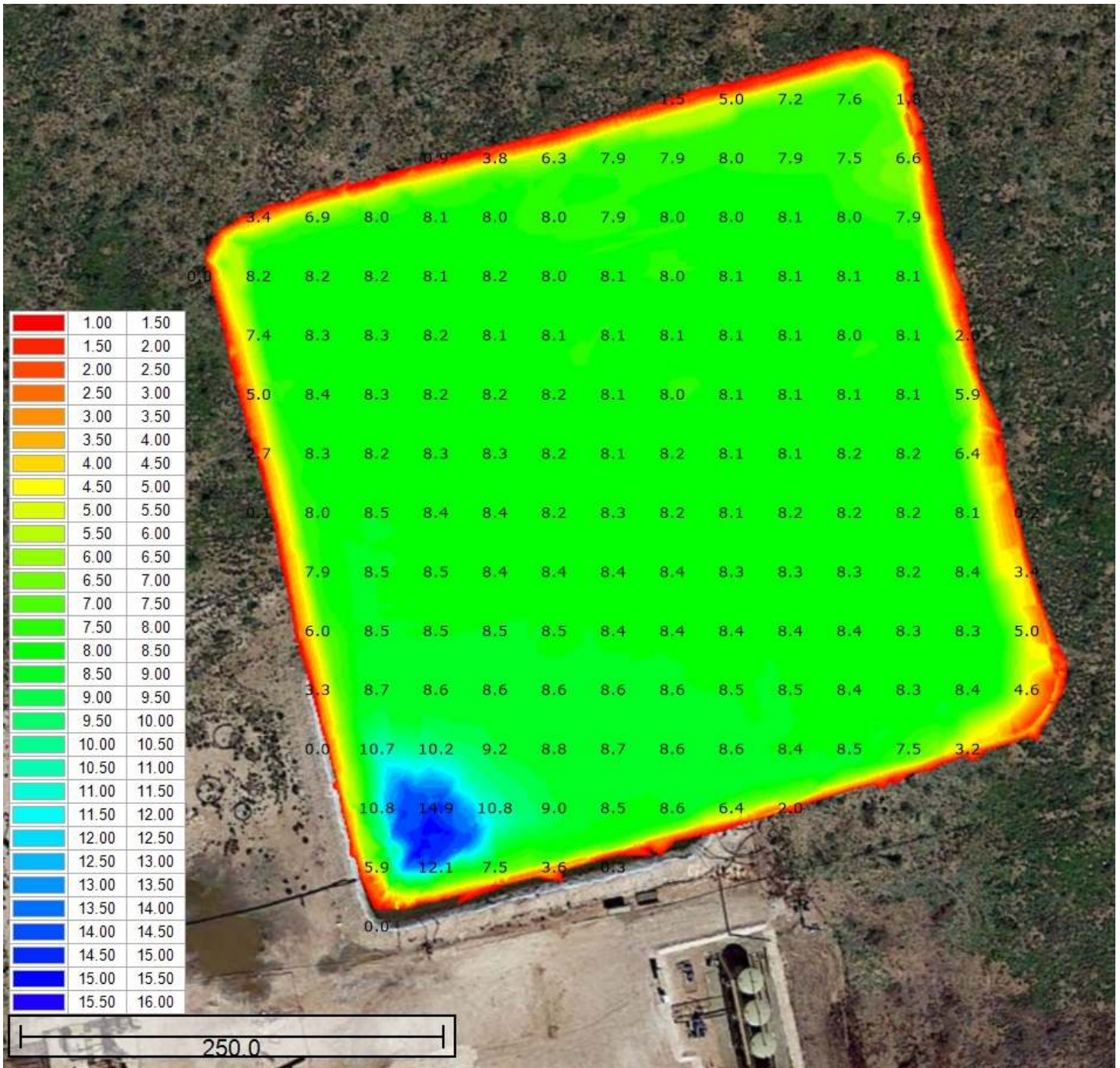


The survey revealed that the pit maintains inconsistent depths. The deepest part of the pit is at the sump and on the southwest end. All water should drain to the sump area. At least 90% of the water in the pit can be utilized for a frac.

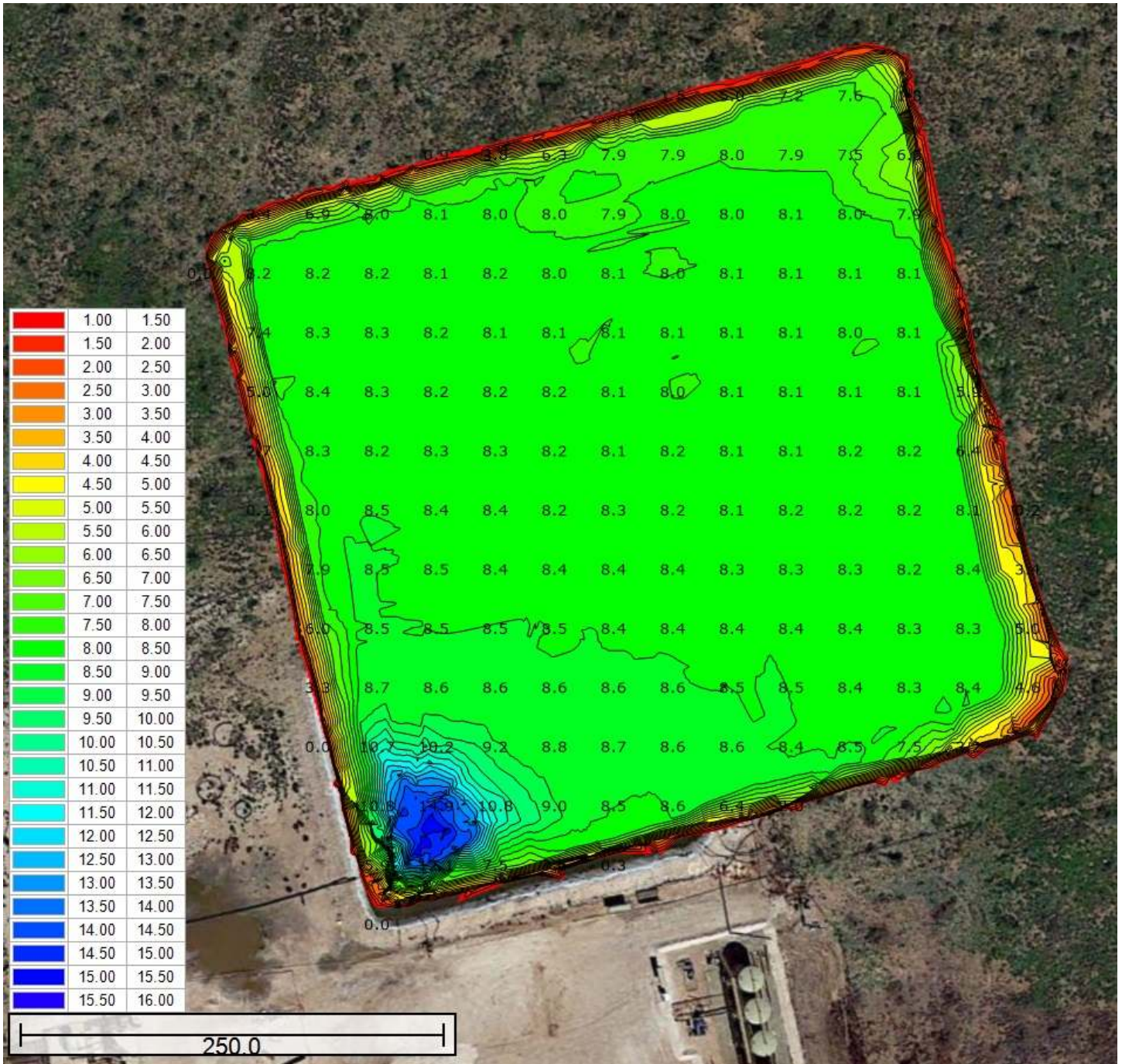
Cowden 19 Frac Pit



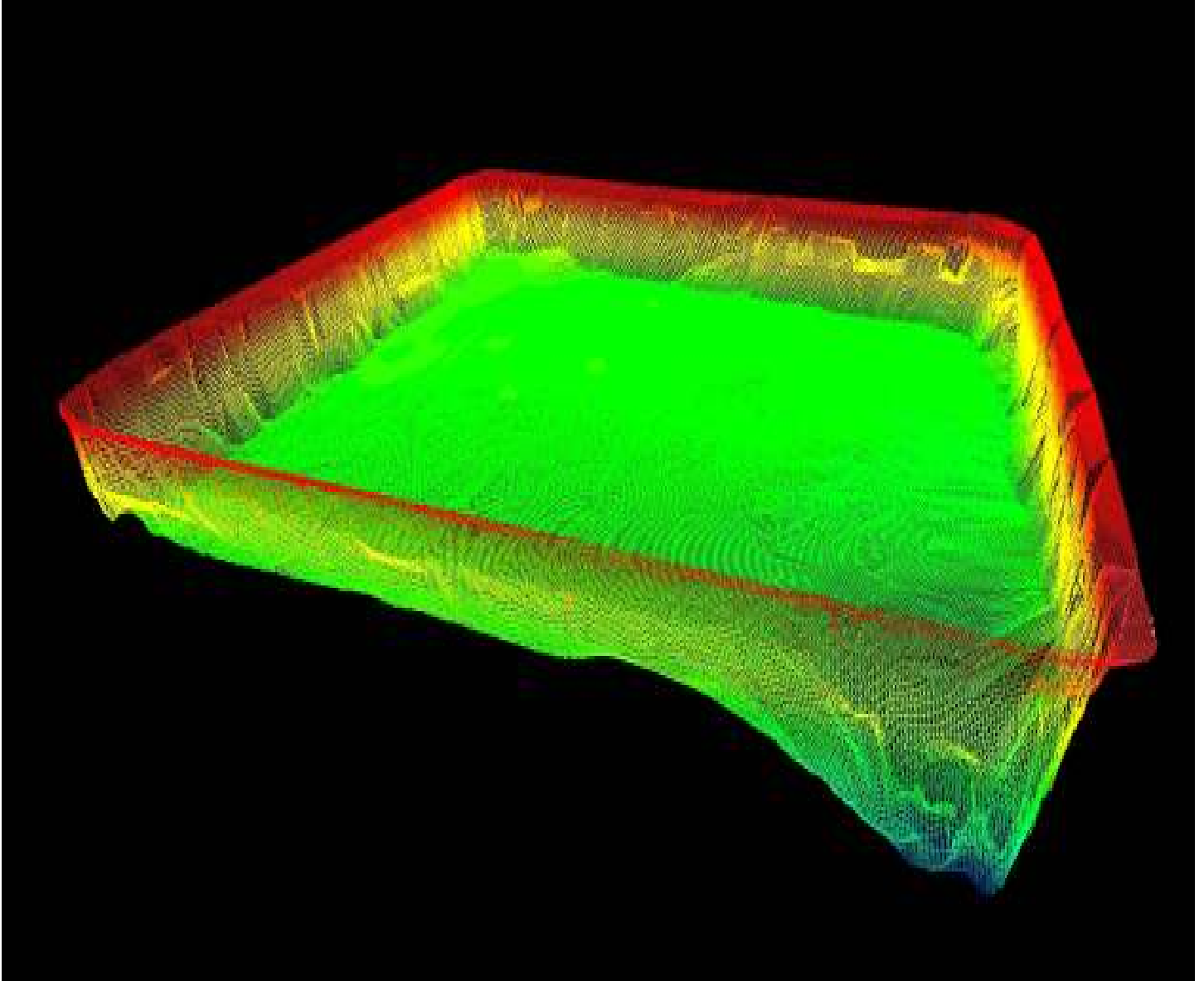
Color Depth Mapping



Color Depth Mapping with Numerical Depths



Color Depth Mapping with Topographical Lines



Detailed 3D color Matrix Map of Frac-Pit Floor and Sides



**Present Water
Level**

RSP Permian Cowden 19 Frac Pit

Gauge	Depth in Feet	Volume - Cubic Feet	Volume Barrels	Volume Gallons	Surface - Sq. Ft.	Surface - Acres
	Time of Measurement					
9		1428275	254369	10683497	175545	4.03
8	-1	1241050	221025	9283054	155767	3.58
7	-2	1060381	188849	7931650	130657	3.00
6	-3	883438	157336	6608116	105678	2.43
5	-4	709983	126445	5310673	94567	2.17
4	-5	540439	96250	4042484	72912	1.67
3	-6	375287	66837	2807147	64897	1.49
2	-7	215465	38373	1611678	49568	1.14
1	-8	64034	11404	478974	19542	0.45
0	-9	18729	3336	140093	15478	0.36
-1	-10	7979	1421	59683	9547	0.22
-2	-11	4776	851	35724	4526	0.10
-3	-12	2363	455	18714	2424	0.06

Chart of Present Frac-Pit Volumes



****Potential Water Levels**

RSP Permian Cowden 19 Frac Pit

Gauge	Depth in Feet	Volume - Cubic Feet	Volume Barrels	Volume Gallons	Surface - Sq. Ft.	Surface - Acres
9	Time of Measurement	1428275	254369	10683497	175545	4.03
10	1	1710508	304633	12794600	190338	4.37
11	2	2048513	364830	15322877	200584	4.60
12	3	2453309	436923	18350751	205548	4.71

Pit can only hold
3 more
additional ft.

**These numbers are extrapolations based on actual data

Chart of Extrapolated Frac-Pit Volumes

**This pit measured 12 ft to the top. Those numbers for levels above 9 ft have been extrapolated to provide volumes at those increased depths.