



Frac Pit Survey for Encana

Completed by:

Transwater Energy, LLC

Encana Burleson Pit

Survey Completed 12/11/2015

Max Depth: 17 feet

Current barrels of Water: 174,722



Encana Burleson Pit

The survey revealed that the pit maintains inconsistent depths. The deepest part of the pit is at the sump on the NW Corner. All water should drain to the sump area. At least 90% of the water in the pit can be utilized for a frac.

Suggestions to improve Utilization and Safety:

1. This pit has a substantial number of tumbleweeds. When drained, these should be removed from the floor of the pit.
2. Gauging this pit from the manual gauge that is located in the center is accurate.





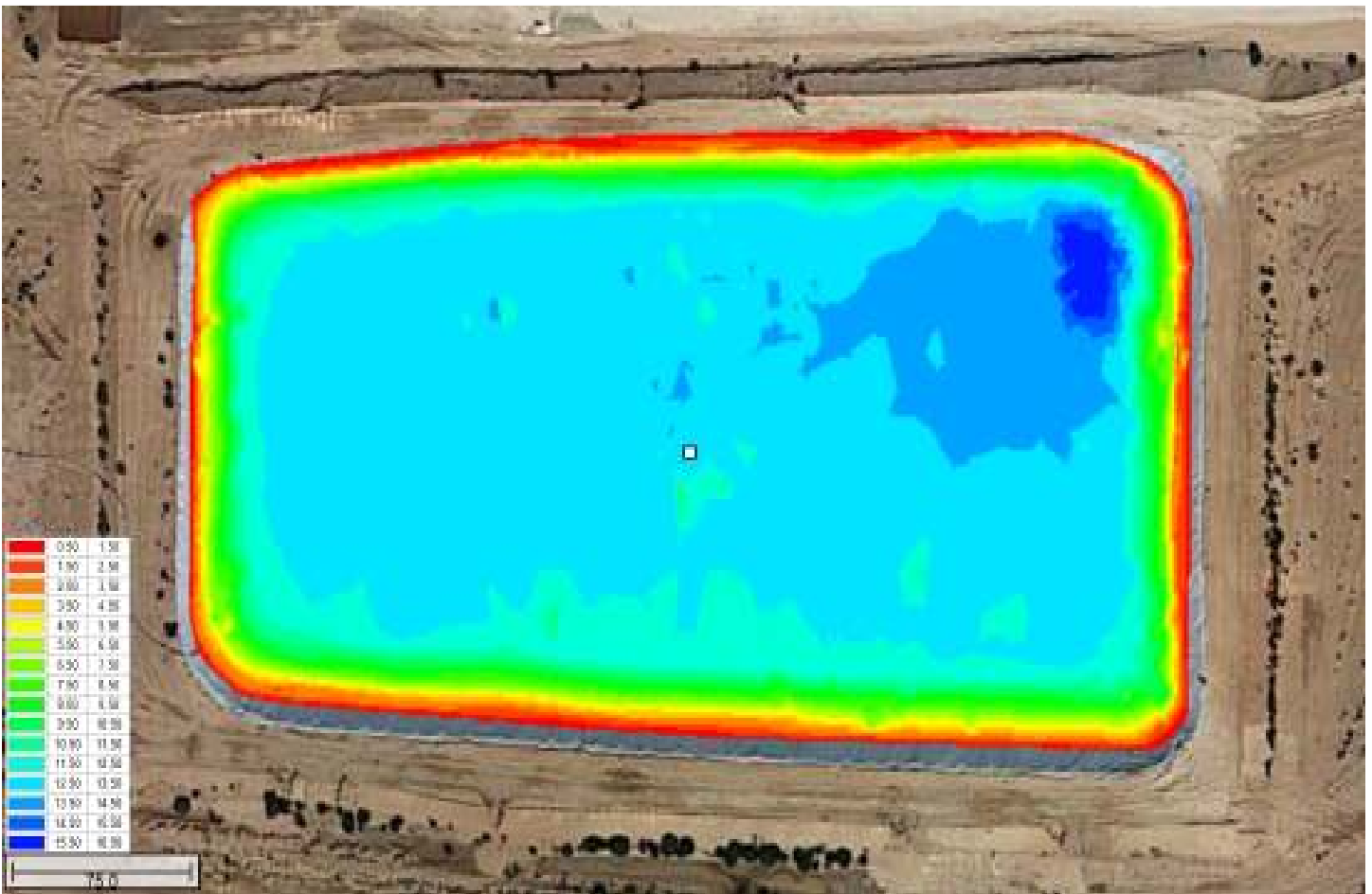




We have seen that a start of tumbleweeds leads to algae growth and then in the summer months there will be an increase to aquatic plant life that can interfere with suction hoses for water transfer pumps.

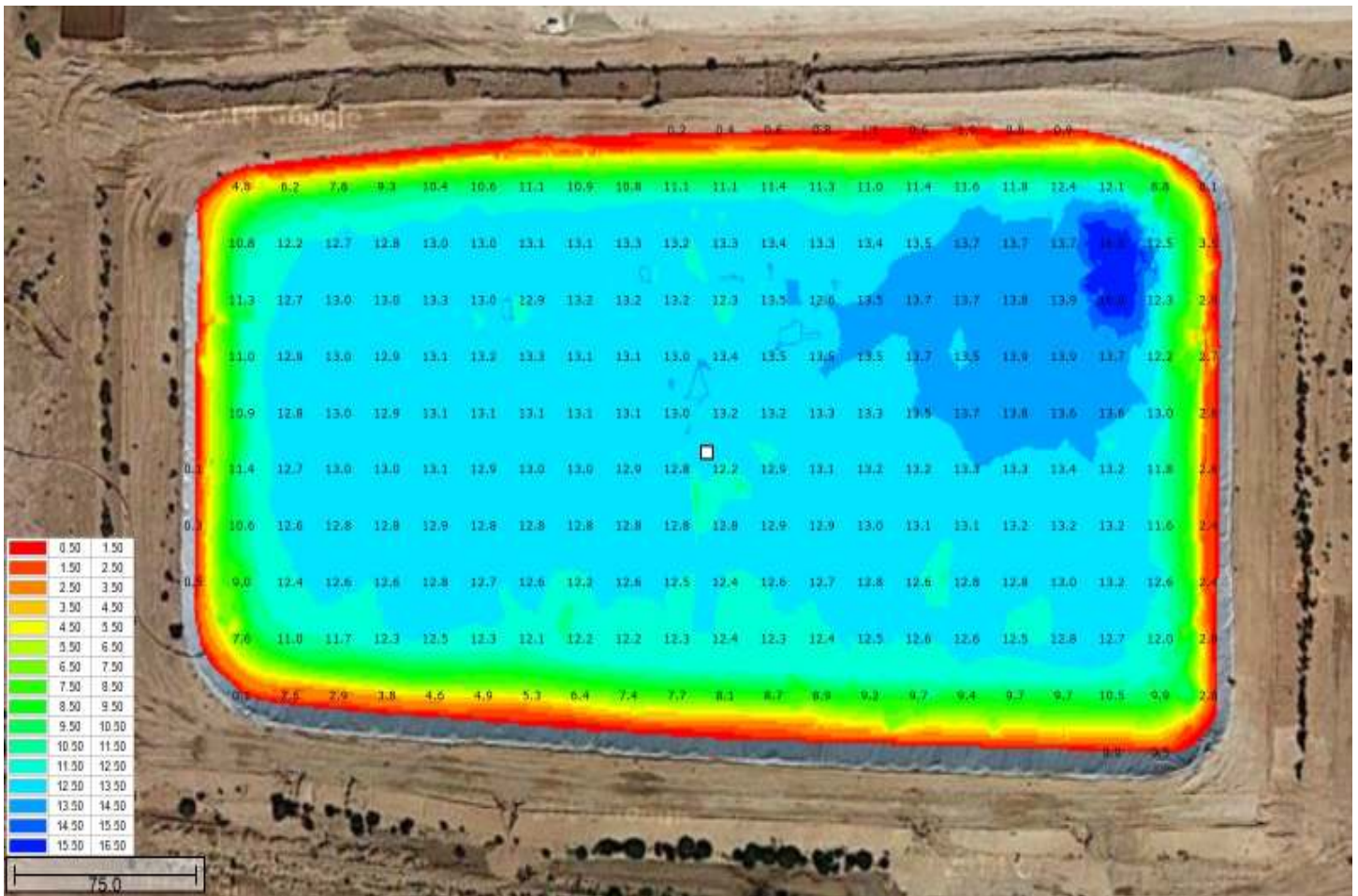


Encana Burleson Pit

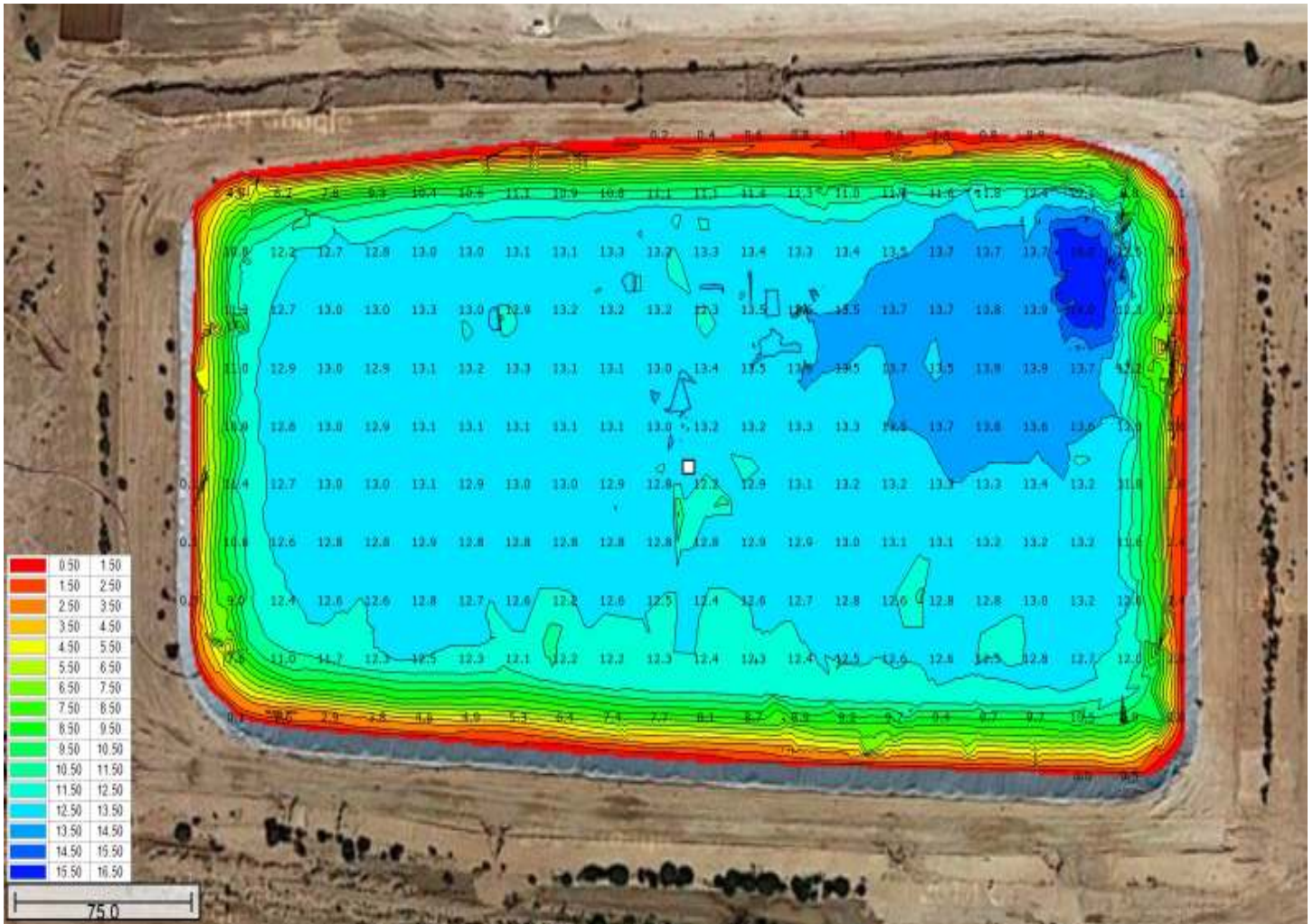


Color Depth Mapping

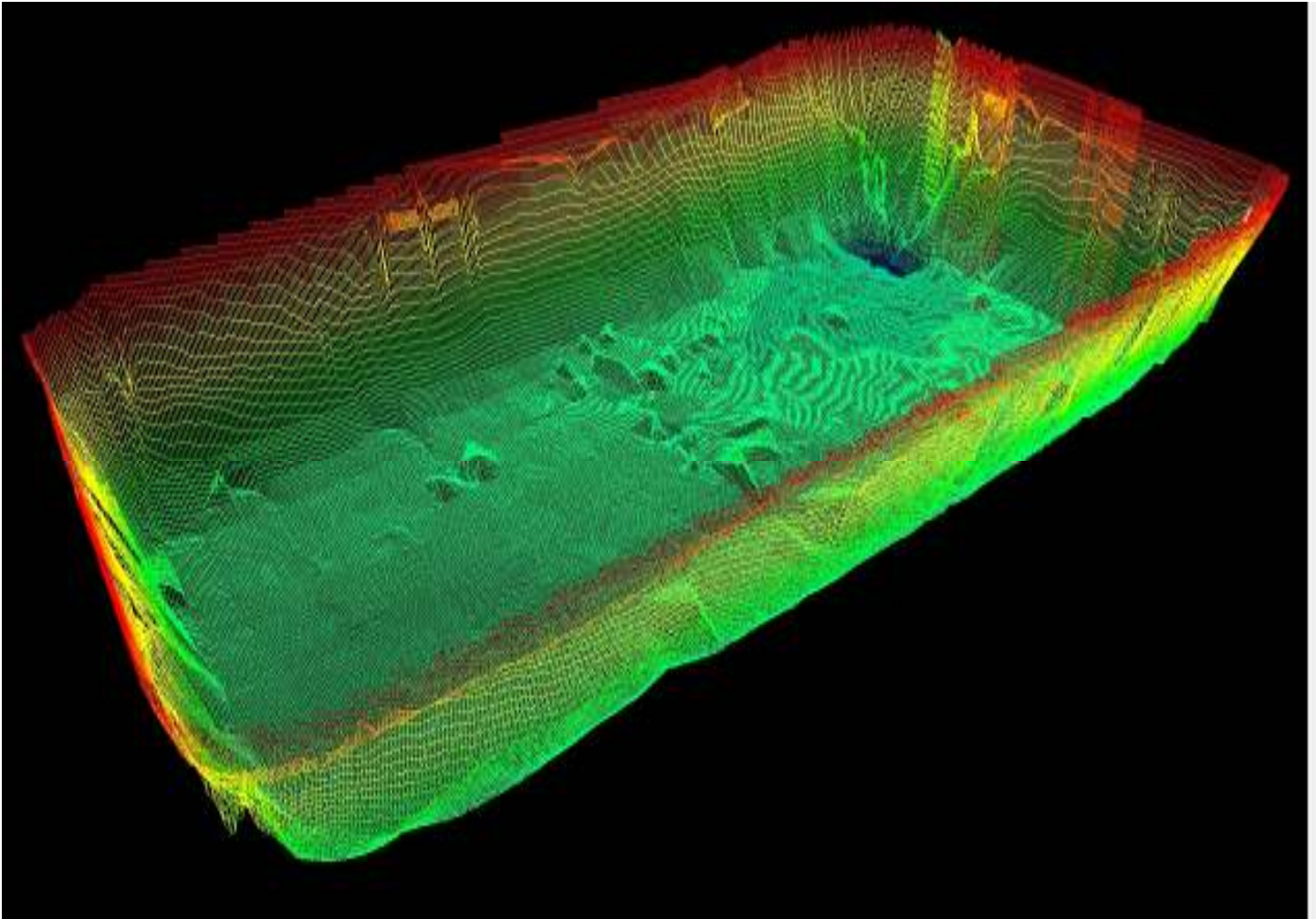
The white square is the location of the manual gauge



Color Depth Mapping with Numerical Depths



Color Depth Mapping with Topographical Lines



Detailed 3D color Matrix Map of Frac-Pit Floor and Sides



**Present Water
Level**

Encana Burleson Pit

Gauge	Depth in Feet	Volume - Cubic Feet	Volume Barrels	Volume Gallons	Surface - Sq. Ft.	Surface - Acres
13	Time of Measurement	981062	174722	7338344	85734	1.97
12	-1	892896	159021	6678862	80023	1.84
11	-2	806907	143706	6035664	72365	1.66
10	-3	723164	128792	5409267	65150	1.50
9	-4	641473	114243	4798218	57587	1.32
8	-5	561489	99999	4199938	50024	1.15
7	-6	483305	86074	3615121	42461	0.97
6	-7	407070	72497	3044884	34898	0.80
5	-8	332946	59296	2490436	27335	0.63
4	-9	261071	46496	1952811	19772	0.45
3	-10	191712	34143	1434006	12209	0.28
2	-11	125260	22308	936945	4955	0.11
1	-13	62512	11133	467590	3502	0.08
0	-14	12758	2272	95430	2251	0.05
-1	-15	1697	302	12694	1924	0.04
-2	-16	617	110	4615.16	984	0.02
-3	-17	30	5	224.4	213	0.00

Chart of Present Frac-Pit Volumes



****Potential Water Levels**

Encana Burleson Pit

Gauge	Depth in Feet	Volume - Cubic Feet	Volume Barrels	Volume Gallons	Surface - Sq. Ft.	Surface - Acres
13	Time of Measurement	981062	174722	7338344	85734	1.97
14	1	1069185	190417	7997504	87541	2.01

Pit can only hold 1 more additional ft.

**These numbers are extrapolations based on actual data

Chart of Extrapolated Frac-Pit Volumes